

State of Wyoming Corner Record

(in compliance with the CORNER PERPETUATION AND FILING ACT, Wyoming Statutes, 1997, Section 33-29-140, et. seq. and the Rules and Regulations of the Board of Registration for Professional Engineers and Professional Land Surveyors)

Reverse side of this form may be used if more space is needed.

Record of original survey and citation of source of historical information (if corner is lost or obliterated). Description of corner monumentation evidence found and/or monument and accessories established to perpetuate the location of this corner. Sketch of relative location of monument, accessories, and reference points with percuete and distance to adjacent corner(s) (if determined in this survey). Method and rationale for reestablishment of lost or obliterated corner.



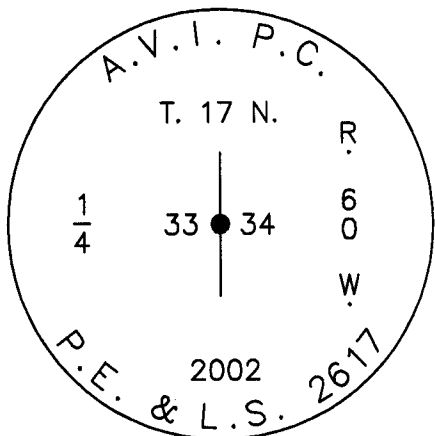
RECORDED 12/31/2002 AT 12:12 PM REC# 339990 BK# 1694 PG# 1162
 EBRA K. LATHROP, CLERK OF LARAMIE COUNTY, WY PAGE 1 OF 1

FOUND: NO EVIDENCE OF ORIGINAL STONE FOUND.

G.L.O. RECORD: UNKNOWN

SET: SET 3 1/4" ALUMINUM CAP ON #5 x 24" REBAR
 SETTING 8" BELOW THE ROAD SURFACE.
 STAMPED AND REFERENCED AS SHOWN.

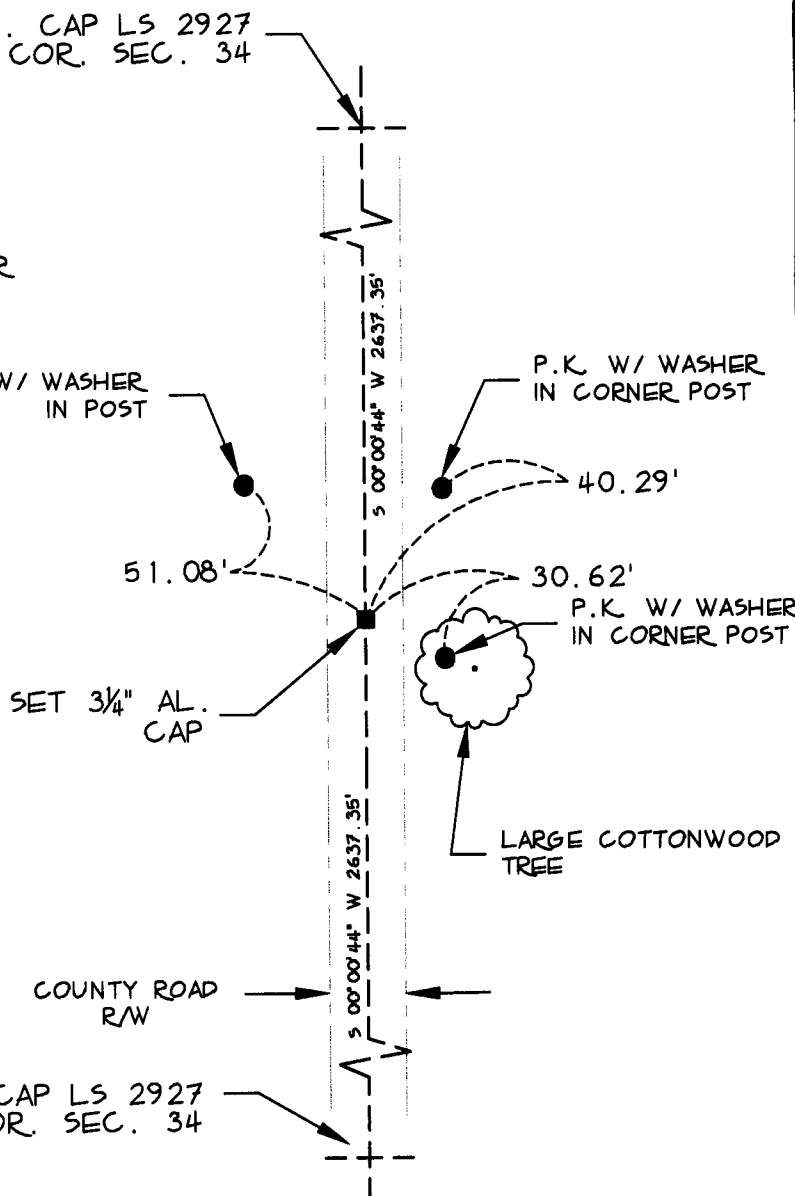
REFERENCES: AS SHOWN



SET MONUMENT DETAIL



FD. 3 1/4" AL. CAP LS 2927
 SW COR. SEC. 34



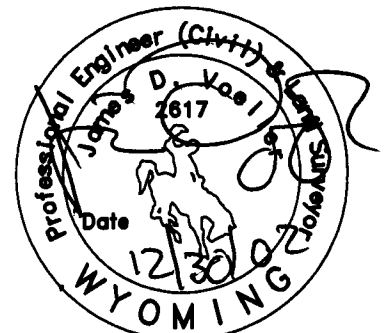
Date of Field Work: 9/02 Office Reference: 2-2368.02

CROSS INDEX DIAGRAM

A	1	2	3	4	5	6	7	8	9	10	11	12	13	14	15	16	17	18	19	20	21	22	23	24	25
B																									
C		6	5	4	3	2																			
D																									
E																									
F																									
G		7	8	9	10	11	12																		
H																									
J																									
K																									
L		18	17	16	15	14	13																		
M																									
N																									
O																									
P		19	20	21	22	23	24																		
Q																									
R																									
S																									
T		30	29	28	27	26	25																		
U																									
V																									
W																									
X		31	32	33	34	35	36																		
Y																									
Z	1	2	3	4	5	6	7	8	9	10	11	12	13	14	15	16	17	18	19	20	21	22	23	24	25

Firm/Agency, Address
James D. Voeller, P.E. & P.L.S.
A.V.I., p.c.
2035 Westland Road
Cheyenne, WY 82001
 Telephone Number: (307) 637-3400

This corner record was prepared by me or under my direction and supervision.
 SEAL & SIGNATURE



2-13